

Hernando County Local Residential Market Metrics - Q3 2017

Single Family Homes

Zip Codes*



Zip Code and USPS Pref. City Name**	Closed Sales	Y/Y % Chg.	Closed Sales Paid in Cash	Y/Y % Chg.	Median Sale Price	Y/Y % Chg.	Average Sale Price	Y/Y % Chg.
Hernando County	985	-4.0%	291	-17.3%	\$157,000	12.9%	\$170,375	13.7%
33523 - Dade City	44	-13.7%	13	-23.5%	\$149,958	48.5%	\$189,171	23.7%
33597 - Webster	16	-15.8%	8	-27.3%	\$180,000	89.3%	\$151,136	13.2%
34601 - Brooksville	54	0.0%	17	-34.6%	\$172,000	7.5%	\$190,027	13.8%
34602 - Brooksville	52	0.0%	8	-50.0%	\$178,900	8.1%	\$192,010	4.2%
34604 - Brooksville	41	-31.7%	10	-28.6%	\$169,500	15.7%	\$189,916	19.4%
34606 - Spring Hill	156	2.0%	55	3.8%	\$134,000	11.0%	\$134,498	11.8%
34607 - Spring Hill	51	2.0%	15	-40.0%	\$251,900	12.0%	\$259,775	8.7%
34608 - Spring Hill	217	-4.4%	72	-7.7%	\$140,000	12.0%	\$143,023	9.8%
34609 - Spring Hill	304	3.1%	89	0.0%	\$166,000	12.9%	\$178,549	18.7%
34613 - Brooksville	61	-17.6%	16	-48.4%	\$173,000	19.3%	\$202,861	18.2%
34614 - Brooksville	33	-2.9%	5	-37.5%	\$168,750	9.6%	\$182,812	15.8%

*Some zip codes included in this report may serve residential properties in multiple counties; statistics presented for these zip codes include properties not located in this county.
 Each MLS listing used in the production of these statistics was assigned to a zip code according to the address provided in the listing (after an address verification/standardization process).
 **The U.S. Postal Service designates a single "preferred" city name to every zip code. Some zip codes also have one or more "acceptable" city names in addition to the preferred name.
 Produced by Florida Realtors® with data provided by Florida's multiple listing services. Statistics for each month compiled from MLS feeds on the 15th day of the following month.
 Data released on Thursday, November 2, 2017. Next quarterly data release is TBD.

Hernando County Local Residential Market Metrics - Q3 2017

Single Family Homes

Zip Codes*



Zip Code and USPS Pref. City Name**	Dollar Volume	Y/Y % Chg.	Pct. of Orig. List Price Received	Y/Y % Chg.	Median Time to Contract	Y/Y % Chg.	New Listings	Y/Y % Chg.
Hernando County	\$167.8 Million	9.2%	96.8%	1.3%	28 Days	-30.0%	1,173	3.9%
33523 - Dade City	\$8.3 Million	6.7%	97.4%	3.4%	24 Days	-40.0%	66	6.5%
33597 - Webster	\$2.4 Million	-4.7%	93.1%	-7.0%	20 Days	-4.8%	18	-25.0%
34601 - Brooksville	\$10.3 Million	13.8%	94.6%	1.1%	78 Days	23.8%	67	11.7%
34602 - Brooksville	\$10.0 Million	4.2%	98.6%	2.6%	47 Days	-19.0%	35	-35.2%
34604 - Brooksville	\$7.8 Million	-18.4%	97.3%	0.2%	31 Days	19.2%	67	6.3%
34606 - Spring Hill	\$21.0 Million	14.0%	96.7%	1.8%	25 Days	-28.6%	167	-11.2%
34607 - Spring Hill	\$13.2 Million	10.9%	93.9%	2.6%	50 Days	-46.8%	71	7.6%
34608 - Spring Hill	\$31.0 Million	4.9%	97.8%	1.3%	20 Days	-28.6%	265	17.3%
34609 - Spring Hill	\$54.3 Million	22.3%	96.2%	0.0%	26 Days	-25.7%	347	11.2%
34613 - Brooksville	\$12.4 Million	-2.6%	95.3%	1.0%	31 Days	-27.9%	79	-12.2%
34614 - Brooksville	\$6.0 Million	12.4%	98.3%	0.9%	19 Days	-56.8%	39	14.7%

*Some zip codes included in this report may serve residential properties in multiple counties; statistics presented for these zip codes include properties not located in this county.
 Each MLS listing used in the production of these statistics was assigned to a zip code according to the address provided in the listing (after an address verification/standardization process).
 **The U.S. Postal Service designates a single "preferred" city name to every zip code. Some zip codes also have one or more "acceptable" city names in addition to the preferred name.
 Produced by Florida Realtors® with data provided by Florida's multiple listing services. Statistics for each month compiled from MLS feeds on the 15th day of the following month.
 Data released on Thursday, November 2, 2017. Next quarterly data release is TBD.

Hernando County Local Residential Market Metrics - Q3 2017

Single Family Homes

Zip Codes*



FloridaRealtors®
The Voice for Real Estate® in Florida

Zip Code and USPS Pref. City Name**	New Pending Sales	Y/Y % Chg.	Pending Inventory	Y/Y % Chg.	Active Inventory	Y/Y % Chg.	Months Supply of Inventory	Y/Y % Chg.
Hernando County	1,057	-12.1%	517	2.8%	945	-7.4%	2.9	-12.1%
33523 - Dade City	45	-22.4%	19	-9.5%	75	2.7%	5.3	20.5%
33597 - Webster	22	15.8%	15	114.3%	19	-26.9%	4.7	-2.1%
34601 - Brooksville	57	-13.6%	31	10.7%	92	-8.9%	4.9	-10.9%
34602 - Brooksville	48	-34.2%	18	-47.1%	33	-46.8%	2.1	-53.3%
34604 - Brooksville	48	-36.0%	28	-9.7%	69	50.0%	4.1	32.3%
34606 - Spring Hill	168	-4.5%	80	12.7%	97	-33.1%	1.7	-39.3%
34607 - Spring Hill	54	-5.3%	28	16.7%	104	2.0%	6.3	1.6%
34608 - Spring Hill	241	-2.8%	102	5.2%	156	11.4%	2.3	9.5%
34609 - Spring Hill	321	-8.8%	165	5.8%	229	-11.9%	2.5	-16.7%
34613 - Brooksville	63	-29.2%	31	-8.8%	96	-2.0%	4.1	-10.9%
34614 - Brooksville	33	0.0%	22	37.5%	43	30.3%	4.0	29.0%

*Some zip codes included in this report may serve residential properties in multiple counties; statistics presented for these zip codes include properties not located in this county.

Each MLS listing used in the production of these statistics was assigned to a zip code according to the address provided in the listing (after an address verification/standardization process).

**The U.S. Postal Service designates a single "preferred" city name to every zip code. Some zip codes also have one or more "acceptable" city names in addition to the preferred name.

Produced by Florida Realtors® with data provided by Florida's multiple listing services. Statistics for each month compiled from MLS feeds on the 15th day of the following month.

Data released on Thursday, November 2, 2017. Next quarterly data release is TBD.

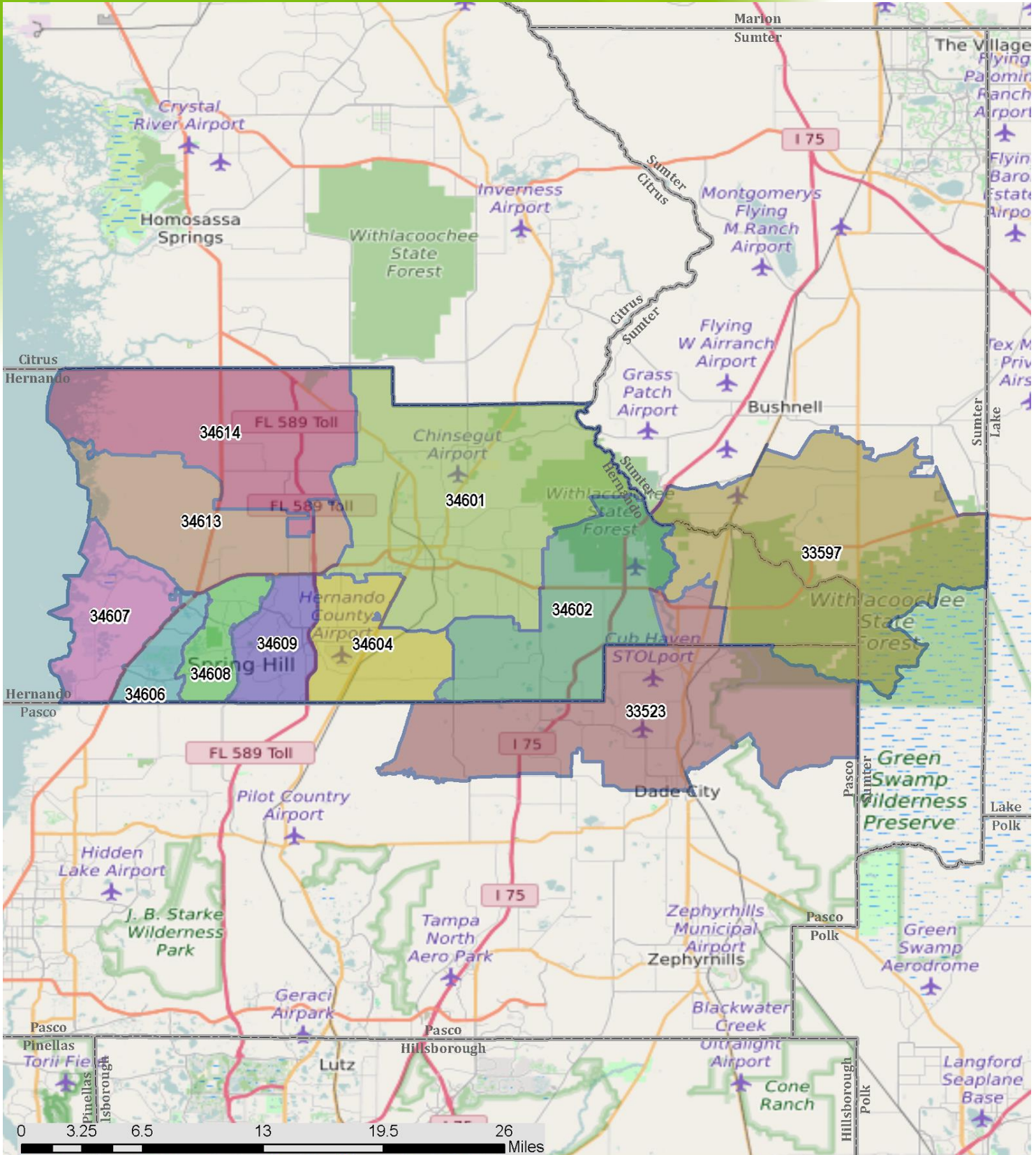
Hernando County Local Residential Market Metrics - Q3 2017

Reference Map*

Zip Codes



FloridaRealtors®
The Voice for Real Estate® in Florida



*These maps are provided to give a general sense of the location of the zip codes included in this report, but they are not guaranteed to be accurate or up-to-date, and were not used in the production of the statistics presented in this report. Rather, each MLS listing used in the production of these statistics was assigned to a zip code according to the address provided in the listing (after an address verification/standardization process).

Produced by Florida Realtors® with data provided by Florida's multiple listing services. Statistics for each month compiled from MLS feeds on the 15th day of the following month. Data released on Thursday, November 2, 2017. Next quarterly data release is TBD.